

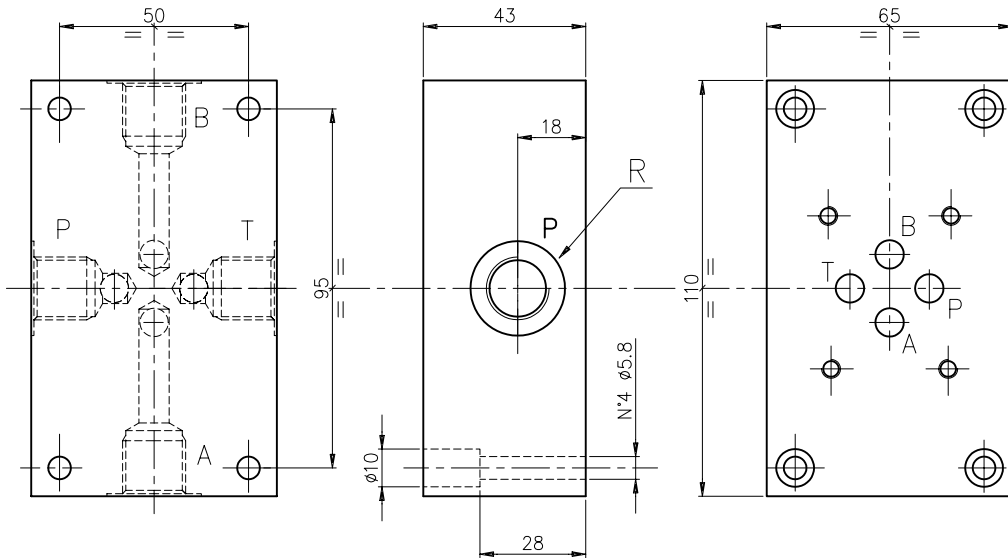
SUBPLATE TYPE ES3D..L AND TYPE ES3D..LL
GRUNDPLATTE TYP ES3D..L UND TYP ES3D..LL



5

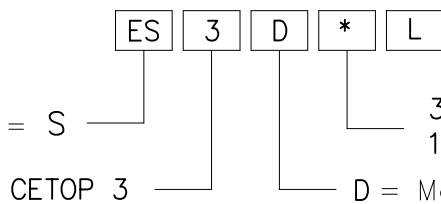
**CETOP 3
NG6**

Subplate with A-B-P-T on side. Weight 1.8 kg
 Grundplatte mit A-B-P-T seitlich. Gewicht 1.8 Kg



Ordering code:
 Bestell-Code:

Subplate
 Grundplatte = S

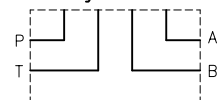


L = side ports
 seitl. Anschlüssen

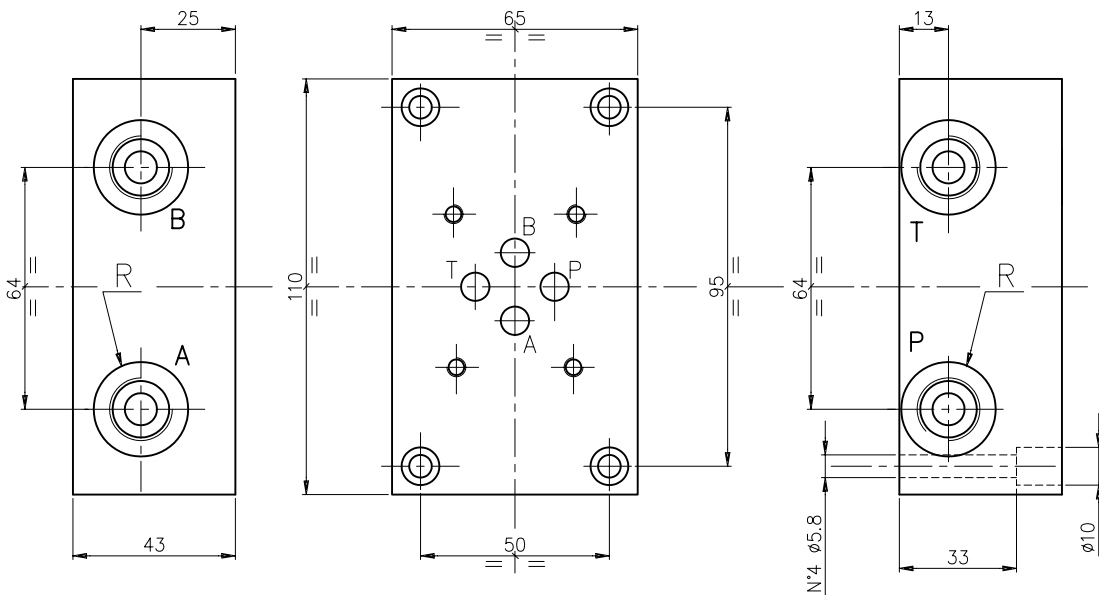
38 = R 3/8" G
 12 = R 1/2" G

D = Model / Modell

Hydr. symbol
 Symbol

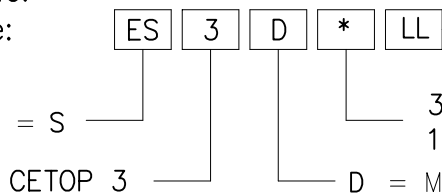


Subplate with A-B-P-T on side. Weight 1.8 kg
 Grundplatte mit A-B-P-T seitlich. Gewicht 1.8 Kg



Ordering code:
 Bestell-Code:

Subplate
 Grundplatte = S



LL = side ports
 seitl. Anschlüssen

38 = R 3/8" G
 14 = R 1/4" G

D = Model / Modell

Hydr. symbol
 Symbol

