

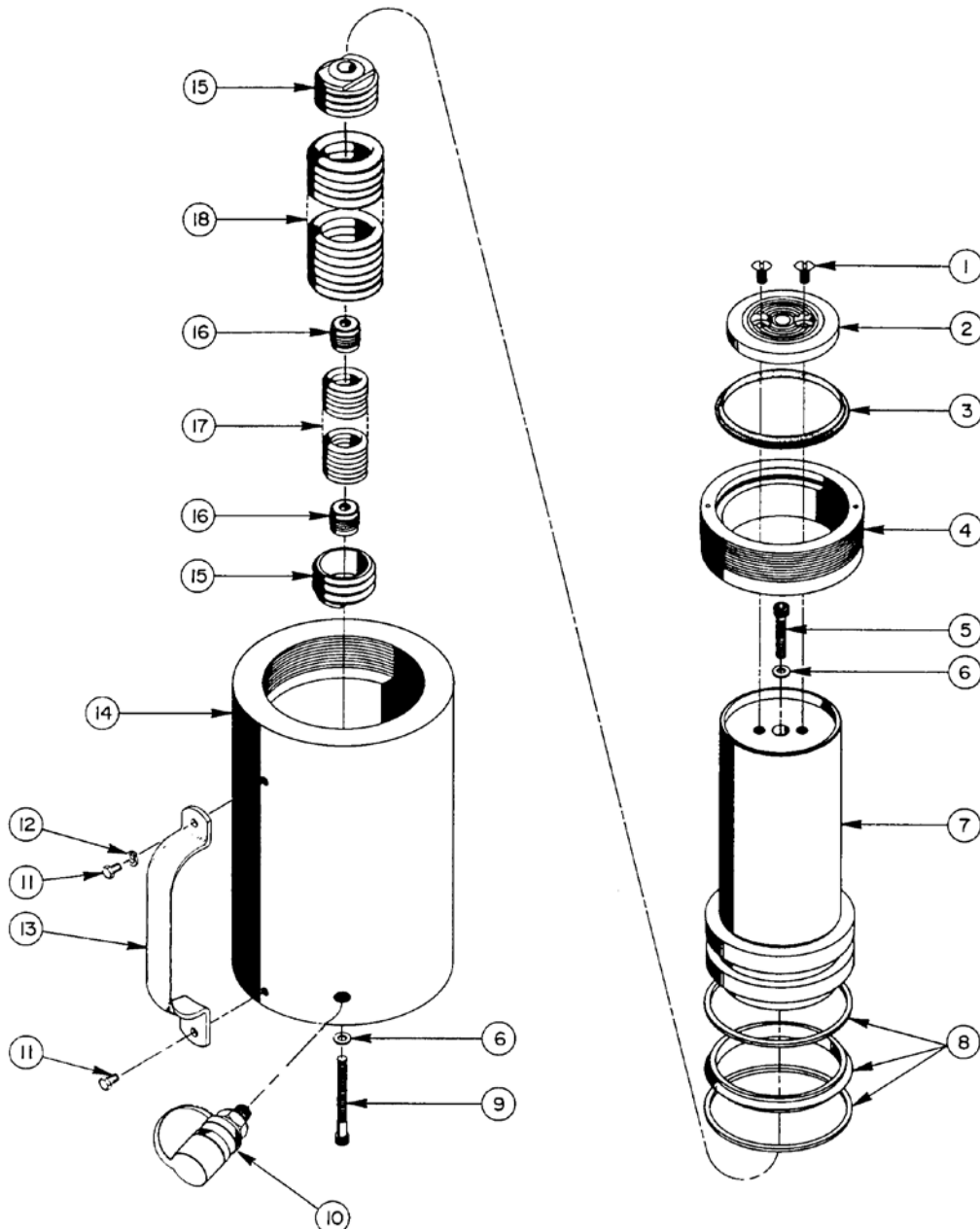


Parts List

Hydraulic Cylinder 10300

MODEL B SINGLE-ACTING, SPRING RETURN HYDRAULIC CYLINDER

Max. Capacity: 103.1 Tons (931,2 kN0 at 10,000 PSI (700 Bar)



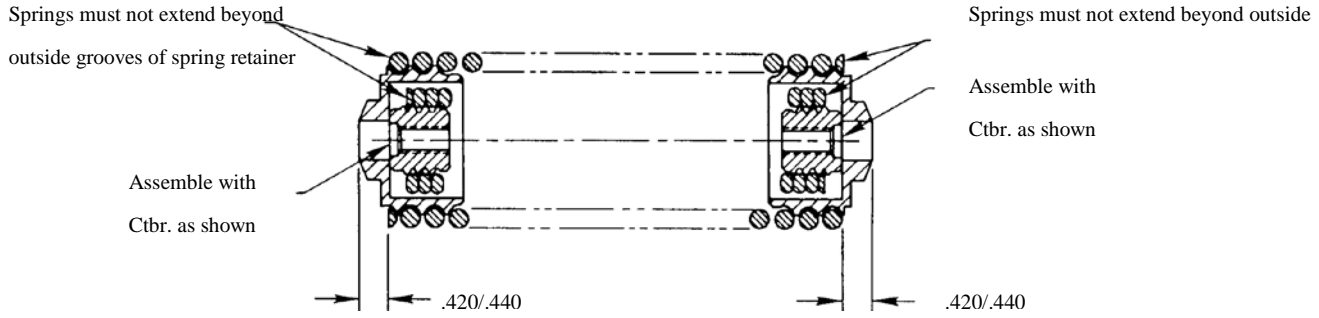
Item No.	Part No.	No. Req'd	Description	Item No.	Part No.	No. Req'd	Description
1	16112	2	Mach. Screw (3/8-16 UNC x 3/4 Lg.)	15	36084	2	Spring Retainer (See detail on page 2 of 2)
2	302651	1	Front Plate	16	201417	2	Spring Retainer (See detail on page 2 of 2)
3	*16113	1	Rod Wiper	17	20145	1	Extension Spring (For RA1006, RA1006-FEC, RA1006-IMT & 3RA1006S; See diagram on page 2 of 2)
4	44122	1	Retainer Nut (Torque to 90/100 ft. Lbs. wet or dry)		208141	1	Extension Spring (For RA1002, RA1002K & 3RA1002S; See diagram on page 2 of 2)
5	11531	1	Cap Screw (3/8-16 INC x 2" Lg.; Torque to 400/425 in. Lbs.)	18	201474	1	Extension Spring (For RA1006, RA1006-FEC, RA1006-IMT & 3RA1006S; See diagram on page 2 of 2)
6	*12042	2	Copper Washer (9/16 x 3/8 x 1/32)		208140	1	Extension Spring (For RA1002, RA1002K & 3RA1002S; See diagram on page 2 of 2)
7	†52462	1	Piston Rod (For RA1002, 3RA1002S & RA1002K)		208141	1	Extension Spring (For RA1002, RA1002K & 3RA1002S; See diagram on page 2 of 2)
8	*19207	1	T-Seal & Back up Rings (Smooth side of Backup Ring must be against seal.)	18	201474	1	Extension Spring (For RA1006, RA1006-FEC, RA1006-FEC, RA1006-IMY & 3RA1006S; See diagram on page 2 of 2)
9	16110	1	Cap Screw (3/8-16 UNC x 3-1/2 Lg.; Torque to 400/425 in. Lbs.; For RA1006, RA1006-FEC, RA1006-IMT & 3RA1006S)		208140	1	Extension Spring (For RA1002, RA1992K & 3RA1002S; See diagram on page 2 of 2)
	11531	1	Cap Screw (3/8-16 UNC x 2" Lg.; Torque to 400/425 in. Lbs.; For RA1002, RA1002K & 3RA1002S)	PARTS INCLUDED BUT NOT SHOWN			
10	10606	1	Ram Half Coupler (For 3RA1002S & 3RA1006S)	*203908	1	Warning Decal (For RA1002 & 3RA1002S)	
	210916	1	Ram Half Coupler (For 3RA1002S & 3RA1006S)	37782	1	Warning Decal (For RA1006, RA1006-FEC, RA1006-FEC, RA1006-IMT & 3RA1006S)	
	251616	1	Coupler (For RA1006-IMT)	251138	1	Trade Name Decal (For RA1006 & 3RA11006-FEC)	
11	10005	2	Cap Screw (1/4-20 UNC x 1/2 Lg.; For 3RA1006S, RA1006, RA1006-FEC & RA1006-IMT)	305670	1	Trade Name Decal (For RA1002)	
12	10244	2	Lockwasher (For 3RA1006S, RA1006, RA1006-FEC & RA1006-IMT)	305255	1	Trade Name Decal (For 3RA1002S)	
13	35903BK2	1	Handle (For RA1006, RA1006-FEC, RA1006-IMT & 3RA1006S)	305256	1	Trade Name Decal (For 3RA1006S)	
	420498BK2	1	Handle (For RA1002K)	9682	1	Straight Fitting (For RA1006-FEC & RA1006-IMT)	
14	†52463	1	Cylinder Body (For RA1002, RA1002K & 3R1002S)	9681	2	Street Elbow Fitting (3/8 NPTF; For RA1006-FEC)	
	†52342	1	Cylinder Body (For RA1006, RA1006-FEC, RA1006-IMT & 3RA1006S)	9575	1	Shut-off Valve (For RA1006-FEC)	

Part numbers marked with an asterisk(*) are contained in Repair Kit No. 300444.

(†) If damage occurs to either the piston rod or cylinder body, both parts should be replaced.



SPRING & RETAINER ASSEMBLY



Refer to any operating instructions included with this product for detailed information about operation, testing, disassembly, reassembly, and preventive maintenance.

Items found in this parts list have been carefully tested and selected. **Therefore: Use only genuine Power Team replacement parts!**

